

Pathologic myopia with bilateral posterior staphylomas

Category(ies): Retina, Vitreous

Contributor: [Jesse Vislisel, MD](#)

Photographer: Randy Verdick, FOPS



Pathologic myopia is defined as myopia over -8.00 D or an axial eye length >32.5 mm. These eyes may undergo progressive elongation with development of degenerative changes of the retina, retinal pigmented epithelium (RPE), and choroid. These photographs show the fundus findings in two eyes with a spherical prescription of -17.00 D. Note the tilted optic discs, peripapillary atrophy, central macular RPE thinning with several discrete regions of RPE atrophy in the left eye, and bilateral posterior staphylomas (the central maculae appear blurred as they are out of the plane of focus). The OCT images show the staphylomas more clearly as a bowing of the posterior structures of the eye.



Figure 1: Fundus OD.

Enlarge

Download

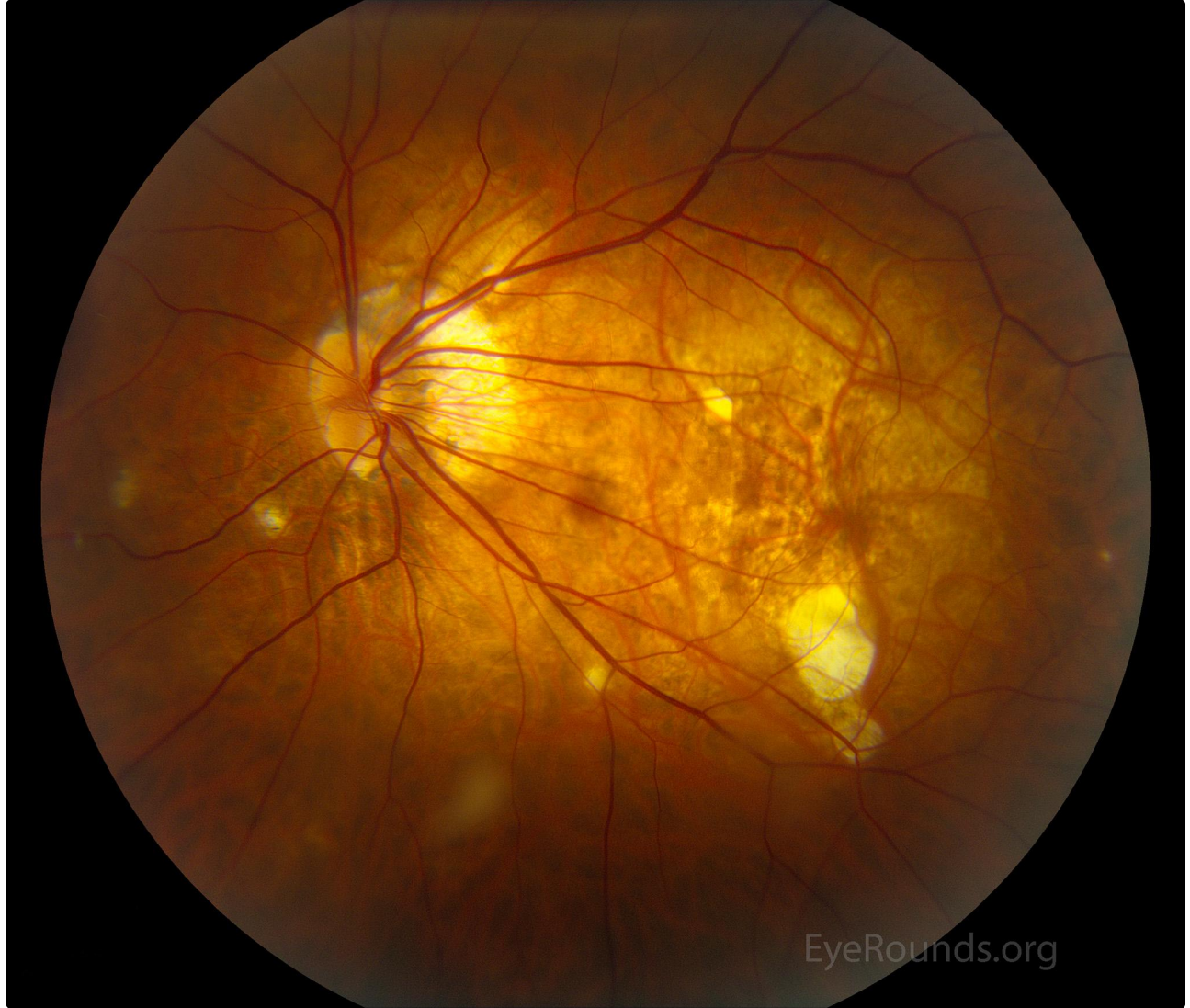
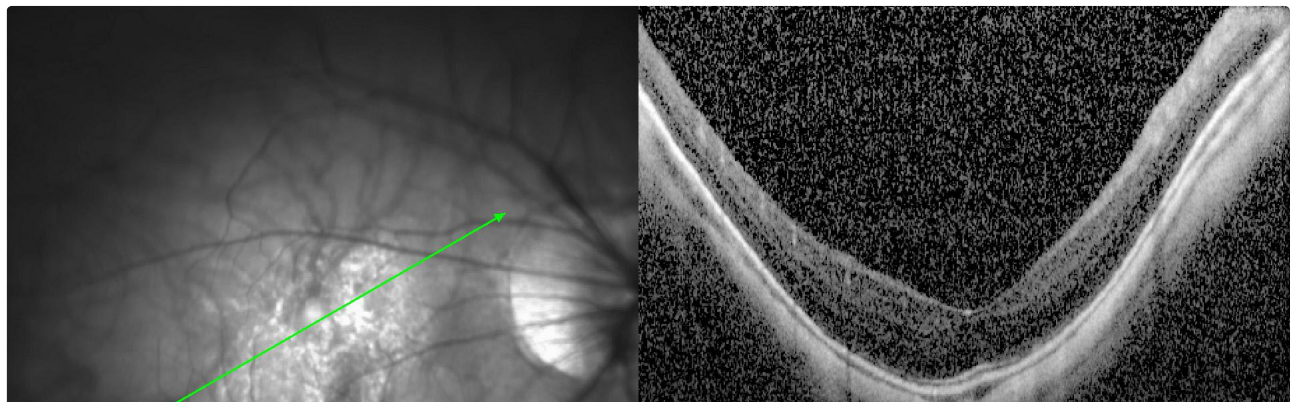


Figure 1: Fundus OS.

Enlarge

Download



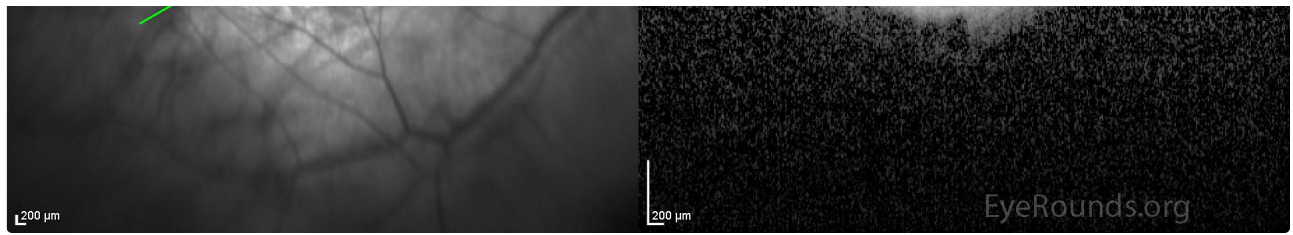


Figure 1: Fundus OD.

[Enlarge](#)

[Download](#)

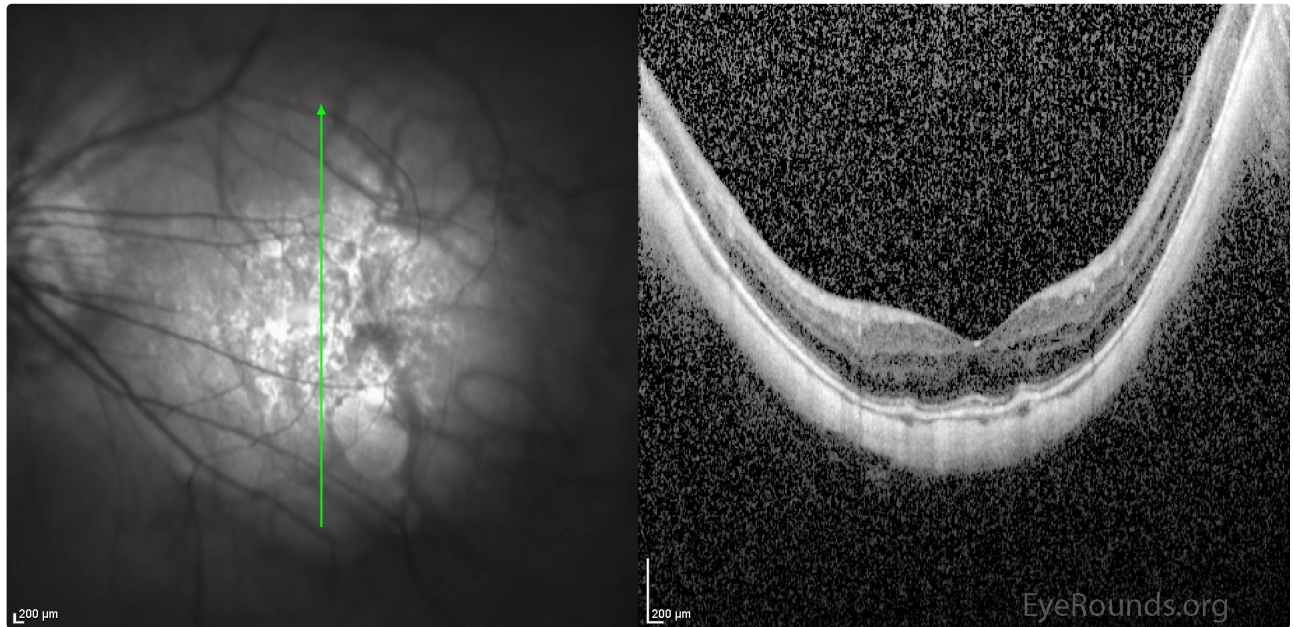


Figure 1: Fundus OS.

[Enlarge](#)

[Download](#)

Image Permissions:



Address

University of Iowa
Roy J. and Lucille A. Carver College
of Medicine
Department of Ophthalmology and
Visual Sciences
200 Hawkins Drive
Iowa City, IA 52242

[Support Us](#)

Legal

Copyright © 2019 The University of
Iowa. All Rights Reserved
[Report an issue with this page](#)
[Web Privacy Policy](#) |
[Nondiscrimination Statement](#)

Related Links

[Cataract Surgery for Greenhorns](#)
[EyeTransillumination](#)
[Gonioscopy.org](#)
[Iowa Glaucoma Curriculum](#)
[Iowa Wet Lab](#)
[Patient Information](#)
[Stone Rounds](#)
[The Best Hits Bookshelf](#)

EyeRounds Social Media

Follow



Receive notification of new cases,
[sign up here](#)
[Contact Us](#)
[Submit a Suggestion](#)